

WELCOME TO

KOKANEE SPRINGS



RV PARK AND CAMPGROUND

NOT ANY ORDINARY CAMPGROUND...

MANUAL



TABLE OF CONTENTS

01

WELCOME CAMPERS!

- 1. EMERGENCY CONTACT INFORMATION
- 2. CAMPGROUND CONTACT INFO

02

3. CAMPFIRE SAFETY

03

- 4. YOUR CAMPSITE
- 5. WATER
- 6. PARKING

04

- 7. ELECTRICITY
- 8. SEWER
- 9. PETS

05

- 10. SMOKING
- 11. FIREWORKS
- 12. PICNIC TABLES & FIRE PITS

06

- 13. VISITORS & GUESTS
- 14. MEET YOUR NEIGHBOURS
- 15. RESPECT YOUR NEIGHBOURS

07

- 16. CRIME PREVENTION & SECURITY
- 17. FIREWOOD
- 18. RV INSURANCE

08

- 19. ILLEGAL DRUGS & ALCOHOL
- 20. ATV'S, GOLF CARTS & OFF ROAD
- 21. SPEED LIMITS

09

- 22. RV MAINTENANCE & REPAIR SERVICE
- 23. RV WINTERIZING
- 24. PEST CONTROL



TABLE OF CONTENTS

10

- 25. GARBAGE DISPOSAL
- 26. WASHROOMS & LAUNDRY
- 27. PLAY GROUNDS

11

- 28. COOK HOUSE
- 29. NATURE AREAS
- 30. DRIVING RANGE

12

- 31. RESTAURANT & LOUNGE
- 32. BEAR SMART CAMPGROUND RULES

13

- 33. GENERAL INFORMATION
- 34. OFF SEASON
- 35. COMMENTS & SUGGESTIONS

ENJOY YOUR STAY



WELCOME CAMPERS!



Kokanee Springs RV Resort welcomes family and friends to another fun filled season! This information will help everyone keep our campground clean, safe and enjoyable for years to come!

We look forward to another successful season and ensuring that all campers and guests have the best camping experience possible. Your safety and enjoyment are our priorities.

1. EMERGENCY CONTACT INFORMATION



RCMP: 911 or (780) 727-6354

Fire & Ambulance: 911 or (780) 963-3551

Stony Plain Hospital (West View Health Centre): (780) 968-3600

Weather Updates: Stay informed about weather conditions during your stay. (weather.gc.ca) **Be prepared for changing weather.**

Emergency Shelter: Know the location of the nearest emergency shelter in case of severe weather

Spruce Grove Veterinary Clinic: (780) 962-3233 5 South Ave, Spruce Grove, AB

2. CAMPGROUND CONTACT INFO



Office: (780) 797-3058

Email: info@kokaneespringsrv.com

Website: www.kokaneespringsrv.com

RV Pub & Grill Restaurant: (780) 797-3100

General Manager/Owner Len Quaghebeur

Cell Phone: (780) 916-3890



3. CAMPFIRE SAFETY



Campfires are an essential part of everyone's camping experience, however they pose a risk to everyone's safety and property when not treated with total respect. Please do not have a campfire in windy conditions. Under no circumstances should a campfire be left unattended! A water hose or a pail of water should be considered just in case. You are allowed to use portable propane fire pits when this occurs, let's hope there are no fire bans.



REMEMBER: F.I.R.E !

F - Find a safe spot: Choose a designated area for your campfire, away from flammable materials and overhanging branches.

Follow local regulations: be aware of fire bans in the area. Parts of Alberta are at risk during dry weather. Notices will be posted in the event Parkland County has a fire ban in effect.

I - Ignite safely: Use matches or a lighter to start the fire. Avoid using flammable liquids like gasoline.

R - Respect the size: Keep your fire manageable and at a safe size. Avoid building it too high or too close to surrounding objects.

E - Extinguish properly: When you're done with the fire, douse it with water until it's completely out. Stir the ashes to ensure they're cool.



4. YOUR CAMPSITE



You are responsible for the general housekeeping of your site. Maintain grass areas and feel free to make improvements that enhance your enjoyment. If you make changes, please return the site to its original condition upon lease termination. For improvement questions, contact Len (G.M. Owner).

5. WATER



PLEASE DO NOT DRINK THE WATER! Due to variations in water quality, use bottled water, boil water, or bring water from home. Shut off water supply when leaving to prevent flood damage. Use pressure washers off-peak, preferably Tuesdays and Wednesdays.



6. PARKING



Avoid parking on roadways to ensure traffic flow. Park extra vehicles out of the way for emergency access. Contact management for arrangements regarding boat and trailer parking.



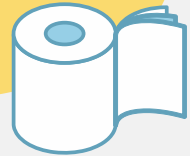
7. ELECTRICITY

Turn off air conditioners and non-essential appliances when not in use. Follow electrical usage guidelines to prevent disruptions. Report breaker issues to the office. Electric heaters, high-consumption lights, and outdoor fridges are not allowed.



8. SEWER

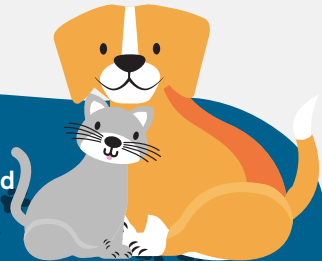
Monitor sewage tank levels, follow manufacturer recommendations, and provide notice for tank emptying. Dump waste water only in designated areas. Use RV toilet paper to prevent tank issues.



9. PETS

Pets are welcome but must be leashed and not left unattended.

Pick up after pets and ensure they don't disturb neighbours with excessive noise or roaming.



10. SMOKING



Dispose of smoking materials in proper containers or campfires. Smoking in nature areas and from vehicles is prohibited. Please smoke with care.

11. FIREWORKS

Fireworks are restricted to the driving range with office permission before midnight. Clean up after use. Purchase fireworks locally, and enjoy celebrations responsibly.



12. PICNIC TABLES & FIRE PITS

Provide your own picnic tables and fire pits. Personalize your site but return it to its original state upon lease termination. Purchase these items at local stores for affordable prices.



13. VISITORS & GUESTS

Invite friends with prior notice. Visitors must check in, park appropriately, and follow campground rules. Additional fees may apply for guests' requirements.



14. MEET YOUR NEIGHBOURS

Live bands play during special events. Details available when arrangements are made. Submit event ideas at the comment box in the front office.



15. RESPECT YOUR NEIGHBOURS

Your site is considered your property for the duration of your lease. Please refrain from trespassing on other sites for your own safety and the respect of others. Other sites may have hidden hazards such as dog leash anchors and pegs that you may not be aware of. Excessive noise at inappropriate hours such as music/generator use and construction projects needs to be considered. We encourage you to get to know your neighbours and enjoy yourselves.



16. CRIME PREVENTION & SECURITY

Fortunately, we have experienced very few incidents at the RV Park. Here are a few security tips:

- Take your valuables with you. (Most effective)
- If you leave belongings behind, keep them out of sight to minimize risk.
- Secure items left out in the open.
- Encourage a neighbourhood watch environment.

Report suspicious activity to the main office or Len (Owner). Complaints are confidential! For emergencies, dial 911 and provide the address 53118-Hwy 31, Parkland County, AB and campsite number.

Staff conduct routine park inspections for safety. Seek assistance from staff if needed. Visit Cabin 2 or the Resident Office for emergency services. On-site security is always available for assistance. We are always around to help!



17. FIREWOOD

Arrangements to purchase firewood can be made from the following suppliers:

(note: Kokanee Springs RV Park does not assume responsibility for these suppliers)

Billy's Top Quality Firewood 780.499-2909



18. RV INSURANCE

You must maintain insurance on your RV and any off-road vehicles at all times. This is mandatory for all RVs and ATVs on site, in place for the protection of you and all of our campers. Management may verify coverage at any time. Liability insurance is required where your RV is parked to cover trips and falls. Please provide insurance copies when renewing your contract.



BE
RESPONSIBLE

19. ILLEGAL DRUGS & ALCOHOL

Illegal drugs are prohibited. Feel free to enjoy your favourite beverages on your site. Be considerate of your neighbours by refraining from unwanted behaviour associated with alcohol. Consider glass free containers to avoid breakage. Your responsible for your guests and your site so please be considerate!

20. ATV'S, GOLF CARTS & OFF ROAD

Follow safety instructions and local laws for vehicle use. Stay on main roads and avoid excessive noise and speed after 9 pm. Respect quiet times for fellow campers.



21. SPEED LIMITS



All vehicles must adhere to a maximum speed of 20 KMP. Follow posted speed limits, especially near pedestrians and children, or in dusty conditions. Excessive speed reports will be investigated, prioritizing your safety. Slow down, stay safe, and enjoy your time here!



22. RV MAINTENANCE & REPAIR SERVICE

For RV problems or on-site services, contact:

Mobilemax RV Service (780) 904-6433 OR

Red Neck RV (780) 963-4233

Max from Mobilemax and Blain & Todd from Red Neck RV are highly skilled Journeyman RV Techs, known for great service and numerous successful repairs at our campground. Please provide them with plenty of notice.

Pairing up with neighbours and friends for fall winterizing can also be cost saving. Kindly be aware that awnings and roof vents are prone to wind damage. We highly recommend securing these items when not in use.



23. RV WINTERIZING

Please heed your manufacturer's winterizing guidelines. Water and power will be shut off by September 24th. Kindly winterize before this date! Disconnect all services to your trailer.

Underground tanks will be emptied and sealed. Secure your RV and remove or secure all valuables.

For professional services, refer to tip #22 for contact information



24. PEST CONTROL



Let's keep those pesky pests away by sealing up openings and using deterrents! Remember to be careful with insecticides. And don't forget to consider using bug spray during the summer months for extra protection and comfort.



25. GARBAGE DISPOSAL



Dumpsters are conveniently spread throughout the park for your ease. Please kindly deposit only bagged garbage in the dumpster, as they are emptied manually. Let's keep it clean and refrain from bringing garbage from home; these bins are reserved for you and your fellow campers!

Refundable containers like pop cans and bottles can be bagged and placed beside the dumpster for recycling. Any proceeds will contribute to our "Meet Your Neighbours" party fund. Remember to keep the dumpster lids closed at all times to prevent birds from rummaging through. Please avoid leaving any uncontained garbage in the open to minimize attracting bears and other wildlife commonly found in the area. Your cooperation ensures a safer and cleaner environment for everyone.

26. WASHROOMS AND LAUNDRY



Enjoy our convenient coin-operated washrooms with showers and laundry facilities, easily accessible at both front and back locations. If you encounter any issues, please report them to the main office. Your comfort is our priority!

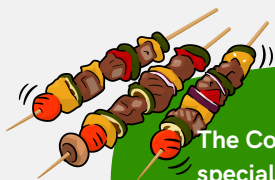


27. PLAYGROUNDS



Please ensure adult supervision at playgrounds for your child's safety. Enjoy our open grass park area and horseshoe pits, but please be cautious of the steel rods. Use these facilities at your own risk, and always follow water safety rules when near water features.





28. COOK HOUSE

The Cook House is the perfect spot for gatherings. For special occasions, make sure to reserve in advance. We recommend giving us a heads-up with notice and reservations.



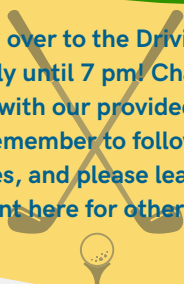
29. NATURE AREAS

Our park boasts plenty of natural areas for everyone to enjoy! Please refrain from cutting or disturbing trees. Feel free to collect deadfall or kindling instead. Stay on established trails with your ATV and avoid feeding wildlife. Your actions can impact their survival, especially in winter. Let's keep our park safe and welcoming for all!



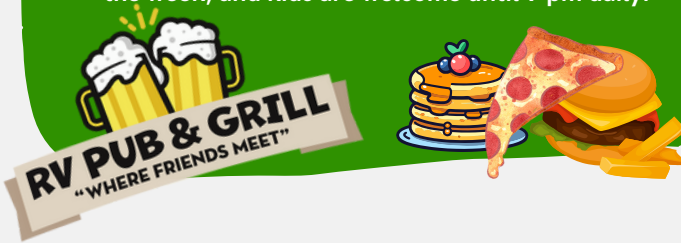
30. DRIVING RANGE

Come on over to the Driving Range, open daily until 7 pm! Challenge yourself with our provided balls and clubs. Remember to follow safety guidelines, and please leave the equipment here for others to enjoy.



31. RESTAURANT & LOUNGE

RV Pub & Grill serves up breakfast, lunch, and dinner, along with a range of amenities. We're open every day of the week, and kids are welcome until 9 pm daily.



32. BEAR SMART CAMPGROUND RULES

- Keep campsites neat and tidy.
- Store food items in odor-proof containers; do not leave outside.
- Store food items in secure locations, not in tents.
- Do not leave coolers outside with food items.
- Clear picnic tables after meals; wipe down thoroughly.
- Clean outdoor stoves, BBQs, and utensils immediately after use.
- Do not leave pet food or dishes outside.
- Do not leave empty beverage containers outside.
- Dispose of garbage in designated containers; do not burn in fire pits.
- Dispose of dishwater at approved locations.
- Empty trailer septic tanks at approved locations.
- Report bear sightings immediately.

Thank you for being bear smart!



33. GENERAL INFORMATION



MORE INFO

Main Office: Open 10 am - 8 pm, change for showers & laundry, golf balls, club rentals, and firewood available.

Park Gates: Locked at 11 pm, reopened at 10 am. Keys are provided to campers with a \$10 fee for lost keys.



34. OFF SEASON



During the winter months, from October 1st to April 30th, the park takes a break. Access is limited to your site only, with all services disconnected. Approval is needed for ATV and snowmobile use. Thank you for your cooperation and understanding!

35. COMMENTS & SUGGESTIONS



We're all ears for your feedback and suggestions! You'll find a comment box at the office. Your input plays a vital role in enhancing our camping experience. Thank you for sharing your thoughts with us!

